

# GLG Japan CoreAlpha C Professional Acc

## Fund Information

Launch Date	29 Nov 1999
Sector	Japan
Domicile	United Kingdom
Currency	GBX
Price (Bid/Mid) (as at 17 Nov 2014)	108.80p
Manager name	Jeff Atherton, Stephen Harker, Neil Edwards, Adrian Edwards
Fund Size	£1299.70m at 17 Nov 2014
Number of Holdings	-
Yield	1.04%
Dividend dates	01 Jun 2014
Type	Accumulation
AMC	0.75%
Legal Structure	OEIC

## Top Holdings % (as at 31 Oct 2014)

MITSUBISHI UFJ FINANCIAL GROUP	6.90
MIZUHO FINANCIAL GROUP	5.39
SUMITOMO MITSUI FINANCIAL GROUP INC	4.99
NTT DOCOMO INC	4.64
SONY CORP	4.56
NINTENDO CO	4.34
NOMURA HLDGS INC	3.87
ASAHI GLASS CO	3.64
CANON INC	3.61
HONDA MOTOR CO	3.30

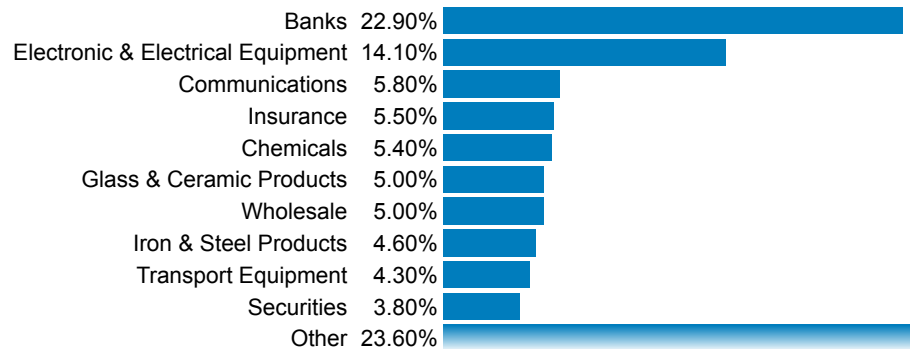
## Fund Objective

The objective of the Fund is to achieve capital growth through investing in the quoted securities of companies operating in Japan.

## Asset Breakdown (as at 31 Oct 2014)



## Sector Breakdown (as at 31 Oct 2014)



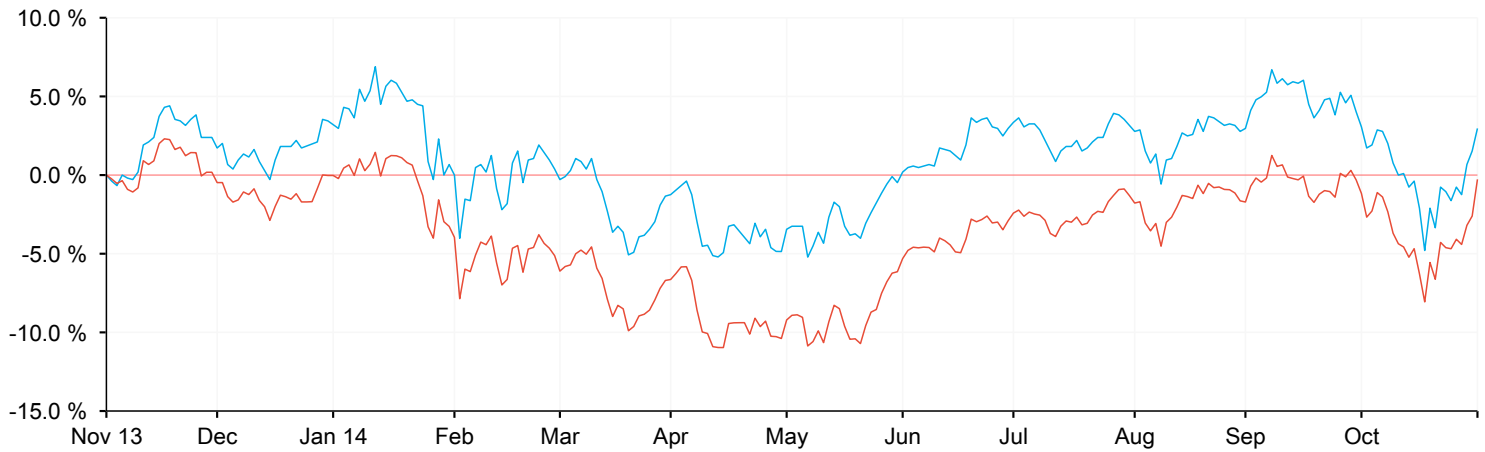
## Region Breakdown (as at 31 Oct 2014)



# GLG Japan CoreAlpha C Professional Acc

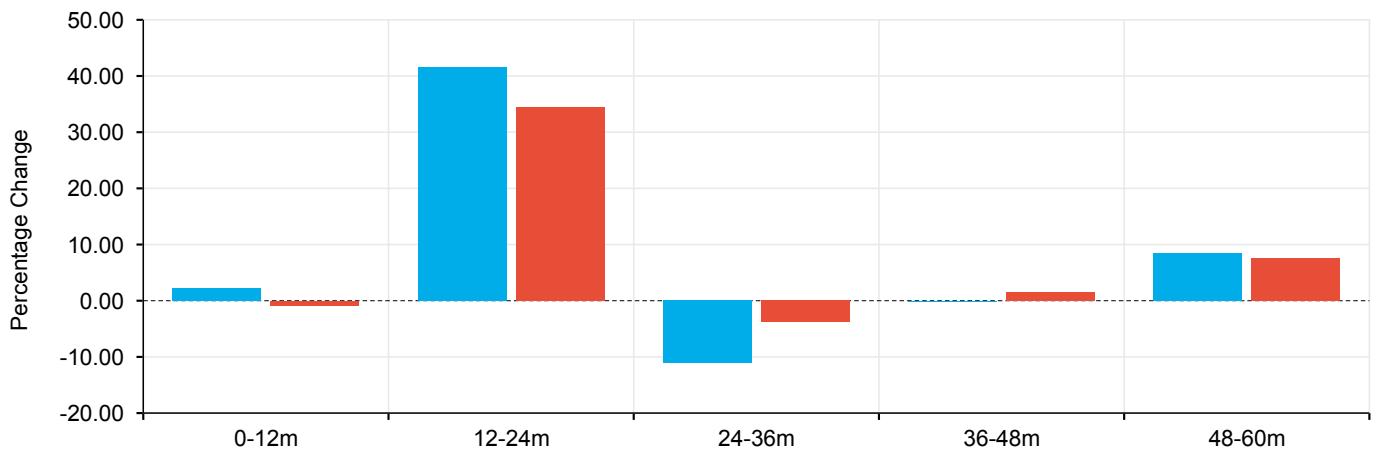
## Cumulative Performance (%) (as at 31 Oct 2014)

	3m	6m	1yr	3yrs	5yrs	10yrs	Since launch
GLG Japan CoreAlpha C Professional Acc	-0.19	8.23	2.28	28.71	39.52	128.69	7.60
Japan	1.05	11.29	-0.85	28.32	40.05	46.36	-



## Discrete Performance (%) (as at 31 Oct 2014)

	0-12m	12-24m	24-36m	36-48m	48-60m
GLG Japan CoreAlpha C Professional Acc	2.28	41.55	-11.10	-0.11	8.52
Japan	-0.85	34.52	-3.78	1.50	7.53



## Risk Statistics

Alpha	Beta	Sharpe	Volatility	r <sup>2</sup>
-0.88	1.17	0.34	15.71	0.78